

优质高产抗逆板栗新品种燕凤的选育¹

路艺¹, 王萌¹, 王凤春², 刘静^{1,3}, 王东升^{1,3}, 王旋^{1,3}, 郭春磊^{1,3}, 曹飞^{1,3}, 李婧实^{1,4}, 孙海涛², 张京政^{1,3}, 齐永顺^{1,3}, 王同坤^{1,3}, 张海娥^{1,3,*}

(¹河北科技师范学院板栗产业技术教育部工程研究中心, 河北秦皇岛 066004; ²迁西县板栗产业研究发展中心, 河北唐山 064300; ³河北科技师范学院园艺科技学院, 河北省特色园艺种质挖掘与创新利用重点实验室, 河北昌黎 066600; ⁴河北科技师范学院海洋资源与环境学院, 河北昌黎 066600)

摘要: 燕凤是从燕山板栗实生大树群体中选育出来的新品种, 具有优质、高产、抗逆性强等优良特性。坚果深褐色, 色泽明亮; 果肉淡黄色, 肉质糯、香、甜, 可溶性固形物含量 19%以上。在河北省迁西县 9 月上旬成熟, 为早中熟品种。结果母枝平均抽生果枝数 2.7 条, 结果枝率 70.6%, 每结果枝刺苞数 2.3 个, 每苞果粒数 2.8 个, 平均单粒重 8.1 g。嫁接后第 2 年开始结果, 8 年生单株产量 3.6 kg, 折合产量 3024.0 kg·hm⁻², 连续结果能力强。耐贮性强, 适宜炒食、制作冰栗等。抗旱, 耐瘠薄, 高抗红蜘蛛, 稳定性和适应性良好。适宜在燕山板栗产区及与此生态类型相似区域种植。

关键词: 板栗; 新品种; 燕凤; 抗逆; 优质; 高产

中图分类号: S664.2 文献标志码: A 文章编号: 1009-9980(2025)01-0001-08

A new Chinese Chestnut cultivar Yanfeng with high quality, high yield and stress resistance

LU Yi¹, WANG Meng¹, WANG Fengchun², LIU Jing^{1,3}, WANG Dongsheng^{1,3}, WANG Xuan^{1,3}, GUO Chunlei^{1,3}, CAO Fei^{1,3}, LI Jingshi^{1,4}, SUN Haitao², ZHANG Jingzheng^{1,3}, QI Yongshun^{1,3}, WANG Tongkun^{1,3}, ZHANG Haie^{1,3,*}

(¹Engineering Research Center of Chestnut Industry Technology, Ministry of Education, Hebei Normal University of Science and Technology, Qinhuangdao 066004, Hebei, China; ²Qianxi County Chestnut Industry Research and Development Center, Tangshan 064300, Hebei, China; ³Hebei Key Laboratory of Horticultural Germplasm Excavation and Innovative Utilization, College of Horticulture Science and Technology, Hebei Normal University of Science and Technology, Changli 066600, Hebei, China; ⁴College of Marine Resources and Environment, Hebei Normal University of Science and Technology, Changli 066600, Hebei, China)

Abstract: Yanfeng is a new chestnut cultivar selected through seedling selection. In 2006, the mother tree was found in Qianxi county, Hebei province by our research group, which was determined to be the superior strain after evaluation. In the spring of 2007, the strong juvenile branches of the mother tree were collected and grafted to the variety breeding nursery of Hebei

收稿日期: 2024-05-17

接受日期: 2024-06-10

基金项目: 板栗产业技术教育部工程研究中心 (河北省教育厅 2024 年度教育部科研创新平台支持计划)

作者简介: 路艺, 女, 助理实验师, 主要从事板栗新品种选育和病虫害防治技术研究。E-mail:

luy2021@126.com

*通信作者 Author for correspondence. E-mail: zhang33haie4@163.com

Normal University of Science and Technology, and the main cultivar Yanshanzaofeng was used as the control. Since 2015, regional trials have been carried out in three sites of Hebei province (including Funing, Qianxi and Qian'an). After eight years of trial and investigation, the superior strain shows obvious characteristics such as high quality, high yield and strong resistance. In December 2023, it was approved by Hebei Forest Variety Certification Committee and officially named as Yanfeng. This cultivar is of medium height. The tree is vigorous with spreading tree gesture. The annual branches are brown, lenticels are small and moderately dense. Leaves are long elliptical and strong green, with 18.9 cm in length and 6.8 cm in width. After grafting for 6 years, the average number of male inflorescence and female flowers in mixed flower branches is 11.4 and 2.3 respectively. The morphology of burs is oval, with coarse spines of medium density and length. The average weight of a single bur is 39.2 g. The nuts have puce and glossy shells. The faint yellow flesh of nut shows the quality of strong glutinousness, aroma and sweetness. Soluble solid content is above 19%. And the content of mineral elements per 1 kg of nuts is 510 mg magnesium, 142 mg calcium, 12 mg iron, 6 mg zinc, 73.4 mg manganese, 2.6 mg copper, 3030 mg potassium, 786 mg phosphorus, and 14 mg sodium. The fruit development period is 90 days. It matures in early September in Qianxi county, which belongs to the early-mid maturing variety. The average number of fruit branches produced by a original bearing-shoot is 2.7, proportion of fruit branches is 70.6%. And each fruit branch has an average of 2.3 burs. Each bur contains an average of 2.8 nuts. The weight of single nut is 8.1 g. After grafting, this variety begins to bear fruits in the 2nd year, and begins to produce abundantly and steadily in the 5th years. The average yield per plant in the 8th year is 3.6 kg, equivalent to a yield of 3024.0 kg·hm⁻², which is higher than the check cultivar Yanshanzaofeng. It has a strong capacity for continuous fruiting, and can produce stable and high yields in successive years under no fertilization condition. The fruit has good storage resistance and can be used for stir-frying, making ice chestnuts, etc. Yanfeng is resistant to dry and barren soil. It is able to maintain normal growth in extremely dry parks and years. It is also resistant to red mite, with good stability and adaptability. Suitable cultivation areas are the Yanshan mountains and areas similar to this ecotype. Orchard should be chosen on gneiss or granite weathered soil. The spacing in the rows and spacing between rows are 2~3 m×3~4 m. Yanzi and Yanbao are appropriate pollination cultivars for Yanfeng.

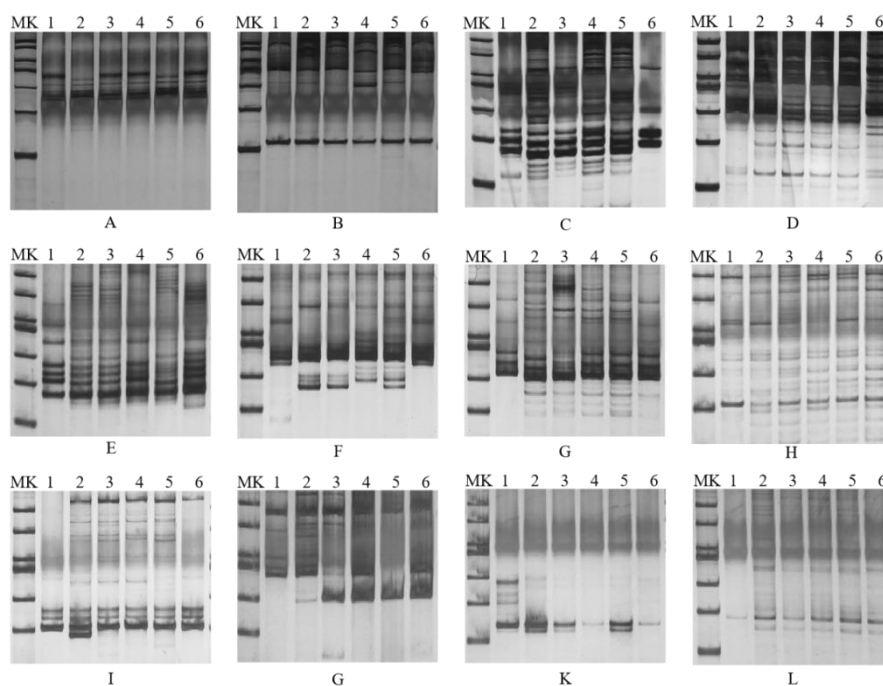
Key words: Chestnut; New cultivar; Yanfeng; Stress resistance; High quality; High yield

板栗是原产我国的优势经济林树种，但现阶段生产上存在品种混杂^[1]、良种化程度低等问题^[2]。虽然选育出的板栗品种已达 300 多个，但这些品种的生产适应性仍有待比较及提高，未来的育种方向应当是在丰产的基础上，更加注重品质育种，同时重视抗性强良种选育^[3]。因此，河北科技师范学院以优质、高产、抗逆为选种目标，自 20 世纪 90 年代开始，在实生资源丰富的河北地区广泛开展选种工作。

1 选育经过

2006 年，河北科技师范学院板栗育种团队和迁西县板栗产业研究发展中心在迁西县洒

河桥镇安家峪村进行考察时，当地农户推荐了 1 株实生栗树，经团队初步综合评价后定为初选优系。2007 年春季，采集母树上 1 年生健壮枝条嫁接到河北科技师范学校内品种选育圃，以生产上主栽品种燕山早丰为对照进行复选。2015 年开始分别在河北省抚宁县、迁西县和迁安市等地进行区域试验。多年试验及观测结果表明，该优系具有丰产性强、产量高的明显性状特点；坚果美观，糯性，香、甜，耐贮性强；抗旱，耐瘠薄。采用 SSR 标记进行品种间的 DNA 多态性比较鉴定，结果表明该品系与燕丽、燕山早丰、大板红、燕龙、燕紫 5 个对照品种 DNA 存在差异（图 1）。2023 年 12 月通过河北省林木品种审定委员会审定，命名为燕凤（图 2），良种编号：冀 S-SV-CM-009-2024。



MK. DNA Marker; 1. 燕丽; 2. 燕山早丰; 3. 大板红; 4. 燕龙; 5. 燕紫; 6. 燕凤; A~L. SSR 标记引物 (ICMA0034, ICMA004, ICMA008a, ICMA009a, ICMA005, ICMA006s, ICMA007, BPPCT016, CSCAT14, CSCAT41, SSrQrZAG4, SSrQrZAG5)

MK. DNA Marker; 1. Yanli; 2. Yanshanzaofeng; 3. Dabanhong; 4. Yanlong; 5. Yanzi; 6. Yanfeng; A~L. Primers of SSR marker (ICMA0034, ICMA004, ICMA008a, ICMA009a, ICMA005, ICMA006s, ICMA007, BPPCT016, CSCAT14, CSCAT41, SSrQrZAG4, SSrQrZAG5).

图 1 燕凤与 5 个对照品种的分分子标记图谱

Fig. 1 The SSR molecular markers map of Yanfeng with five control cultivars



图 2 板栗新品种燕凤

Fig. 2 A new Chinese chestnut cultivar Yanfeng

2 主要性状

2.1 植物学特性

树体高度中等，树姿开张。1 a 生枝褐色，皮孔小、圆形、密度中等。叶片长椭圆形，平均长度 18.9 cm、宽度 6.8 cm，浓绿色，叶背茸毛稠密，叶姿平展，先端急尖，锯齿浅而大。燕凤嫁接 6 a 后，混合花枝雄花序平均 11.4 个，雌花数平均 2.3 个；结果枝长度 31.2 cm，粗度 0.9 cm，尾枝长 7.6 cm。刺苞椭圆形，平均单苞重 39.2 g，刺苞长 7.2 cm、宽 5.5 cm、高 4.8 cm；刺束粗、中等密度和长度、硬，黄绿色，刺束分支角小，成熟时‘十字’裂。坚果椭圆形，深褐色，色泽明亮，果尖突出，茸毛稀疏，筋线不明显，底座中等，接线平滑。

2.2 经济特性

坚果果肉淡黄色，质地细腻，糯性、甜、香，可溶性固形物含量 19%以上；耐贮性强。结果母枝平均抽生果枝数 2.7 条，结果枝率 70.6%，每结果枝苞数 2.3 个，出实率 39.8%，每苞果粒数 2.8 个，单粒重 8.1 g，8 a 生单株产量 3.6 kg，折合产量 3024.0 kg·hm⁻²，高于对照燕山早丰（表 1）。

表 1 经济特性对比

Table 1 Comparisons on economic characteristics

品种 Cultivar	结果枝数 Number of fruit branches	每结果枝苞数 Number of burs per fruit branch	每苞粒数 Number of nuts per bur	单粒重 Average weight per nut/g	单株产量 Yield per plant/kg	折合产量 Yield/(kg·hm ⁻²)
燕凤 Yanfeng	72.2	2.3	2.8	8.1	3.6	3024.0
燕山早丰 Yanshanzaofeng	72.9	2.4	2.3	7.3	2.8	2345.0

2.3 品质特性

每 100 g 坚果重含有水分 52.8 g，淀粉 27.1 g，蛋白质 8.9 g，脂肪 0.8 g，可溶性糖 8.22 g，灰分 0.96 g；每 1 kg 坚果矿质元素含量为镁 510 mg、钙 142 mg、铁 12 mg、锌 6 mg、锰 73.4 mg、铜 2.6 mg、钾 3030 mg、磷 786 mg、钠 14 mg。

2.4 物候期

燕凤在河北迁西县，萌芽期 4 月 22 日，展叶期 4 月 28 日，雄花盛花期 6 月 10 日，雌花盛花期 6 月 17 日，果树成熟期 9 月上旬，落叶期 10 月底—11 月初，发育期 90 d 左右，为早中熟品种。

2.5 结果习性

燕凤嫁接后第 2 a 开始结果，第 5 a 开始丰产稳产，6 a 生单株产量可达 3.6 kg 以上，每公顷产量 3000 kg 以上，连续结果能力强，无大小年，产量高，无肥水条件下可连年稳产高产（表 2）。

表 2 稳产性对比

Table 2 Comparisons on yield stability

品种 Cultivar	嫁接后第 5 年 5 th year after grafting		嫁接后第 6 年 6 th year after grafting		嫁接后第 8 年 8 th year after grafting	
	平均单株产量	折合产量	平均单株产量	折合产量	平均单株产量	折合产量

	Average yield per plant/kg	Yield/(kg·hm ⁻²)	Average yield per plant/kg	Yield/(kg·hm ⁻²)	Average yield per plant/kg	Yield/(kg·hm ⁻²)
燕风 Yanfeng	3.3	2711.5	3.7	3072.0	3.6	3024.0
燕山早丰 Yanshanzaofeng	2.3	1970.0	2.8	2345.0	3.4	2796.5

2.6 抗逆特性

抗逆性强，抗旱，耐瘠薄。在极度干旱的园区和年份，能够保持正常生长。在现有品种常出现势弱早衰的干旱片麻岩陡坡山地种植，不出现早衰现象。高抗红蜘蛛，稳定性和适应性良好（表3）。

表3 抗逆特性对比
Table 3 Comparisons on stress resistance

品种 Cultivar	抗旱性 Drought resistance	红蜘蛛抗性 Resistance to red mite
燕风 Yanfeng	强 Strong	高抗 High resistant
燕山早丰 Yanshanzaofeng	中 Medium	中抗 Moderate resistant

3 栽培技术要点

适宜在燕山板栗产区及与此生态类型相似的区域种植，以片麻岩、花岗岩风化的土壤栽植为宜。建议栽植密度 2 m×3 m 或 3 m×4 m；嫁接 5 年以上，开始逐年间伐。授粉树品种可选用燕紫^[4]、燕宝^[5]等。树形宜采用开心形、多主开心形或主干疏层形。幼树注重夏季修剪，进行年内多次摘心，增加分枝数量，加快树体整形。冬季修剪只采用疏剪方式，不进行短截。幼树只疏除个别徒长枝，其余枝条保留缓放，以果压冠；成龄树采用‘抓大放小’修剪^[6]，疏除过高过密的、交叉重叠的大枝或中枝，其余小枝不修剪，控制树体高度在 3~5 m。

4 综合评价

燕风树势强健，树姿开张；结果早，产量高，连续结果能力强；坚果甜香糯，品质优良；抗旱性强，耐瘠薄，适宜在燕山板栗产区及与此生态类型相似区域种植。

参考文献 References:

- [1] 韩元顺, 许林云, 周杰. 中国板栗产业与市场发展现状及趋势[J]. 中国果树, 2021(4): 83-88.
HAN Yuanshun, XU Linyun, ZHOU Jie. Status and trend of the development of chestnut industry in China[J]. China Fruits, 2021(4): 83-88.
- [2] 易善军. 我国板栗产业发展现状及策略[J]. 西部林业科学, 2017, 46(5): 132-134+149.
YI Shanjun. Situation and development strategy of chestnut industry in China[J]. Journal of West China Forestry Science, 2017, 46(5): 132-134+149.
- [3] 王同坤, 汪民. 中国板栗种质资源[M]. 北京: 中国林业出版社, 2020: 12-19.
WANG Tongkun, WANG Min. Chestnut germplasm resources in China[M]. Beijing: China Forestry Publishing House, 2020: 12-19.

- [4] 张京政, 齐永顺, 王同坤, 杨济民, 佟跃武. 板栗新品种‘燕紫’[J]. 园艺学报, 2016, 43(12): 2491-2492.
ZHANG Jingzheng, QI Yongshun, WANG Tongkun, YANG Jimin, TONG Yuewu. A new chestnut cultivar ‘Yanzi’[J]. Acta Horticulturae Sinica, 2016, 43(12): 2491-2492.
- [5] 郭春磊, 曹飞, 王东升, 张京政, 齐永顺, 王同坤, 蔡德义, 佟景梅. 晚熟优质板栗新品种‘燕宝’[J]. 园艺学报, 2024, 51(03): 697-698.
GUO Chunlei, CAO Fei, WANG Dongsheng, ZHANG Jingzheng, QI Yongshun, WANG Tongkun, CAI Deyi, TONG Jingmei. A late ripening and high quality *Castanea mollissima* cultivar ‘Yanbao’[J]. Acta Horticulturae Sinica, 2024, 51(03): 697-698.
- [6] 张丽丽. 抓大放小修剪对燕山板栗生长结果的影响[D]. 河北科技师范学院, 2020.
ZHANG Lili. Influence of ‘cut big and retain small’ pruning on growth and fruiting of Yanshan Chestnut[D]. Hebei Normal University of Science and Technology, 2020.